

1 Teaching

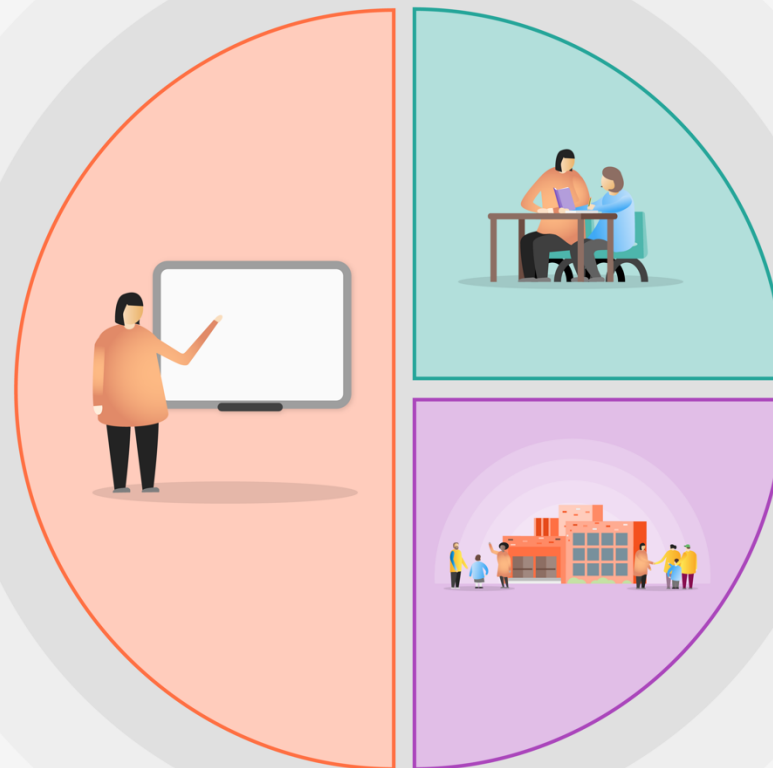
All of our Pupils are sensory learners and may have missed out on many sensory experiences whilst in lock down.

School will use the catch up funding to help implement the following;

- Implement a more robust sensory learning environment with the replacement of old floor projectors...
- CPD for staff in the effective use .

The Catch up Funding for our school equates to £140 per pupil for 2 terms

TOTAL = £4,900



2 Targeted academic support

To enable improved access to the curriculum.

- Install 2 new floor projectors in separate areas (thus releasing the mobile floor projector for more consistent use between classes.

3 Wider strategies

To enable continued access to the sensory curriculum:

- Provide ongoing technical support
- Train staff in the use of the floor projectors with continuing CPD....